



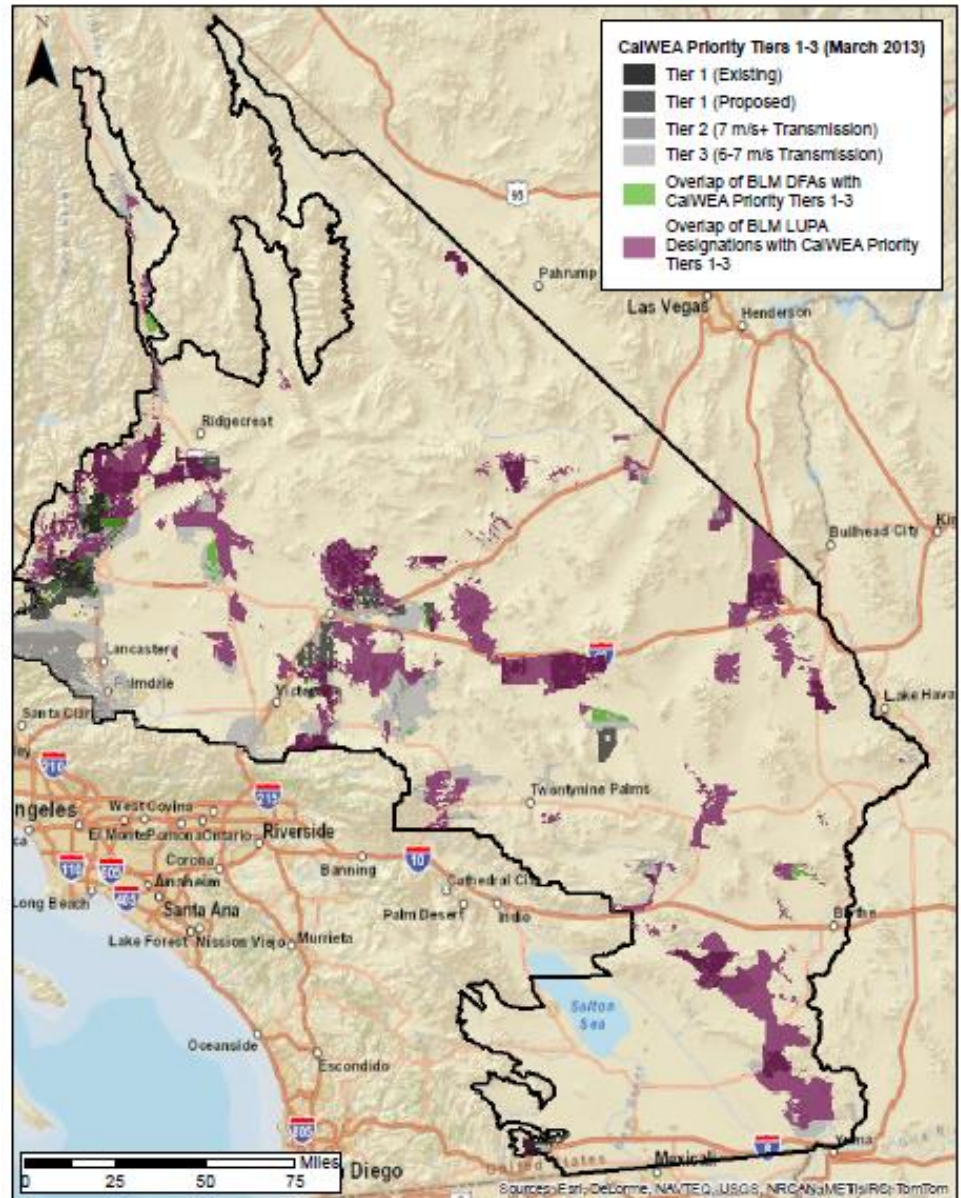
DRECP: BLM Wind Exclusions

The best wind resources within the DRECP region are shown in shades of gray.

BLM wind prohibition areas are shown in purple-overlay

Wind permitted in Development Focus Areas – green-overlay areas

CalWEA estimated DRECP maximum new-wind potential = 1,000 MW



CalWEA Priority Tiers 1 through 3 and DRECP Preferred Alternative BLM Land Use Plan Amendment Designations** and Development Focus Areas - November 2015

**BLM conservation areas include ACECs, NLCS, and Wildlife Allocations as provided by the DRECP.